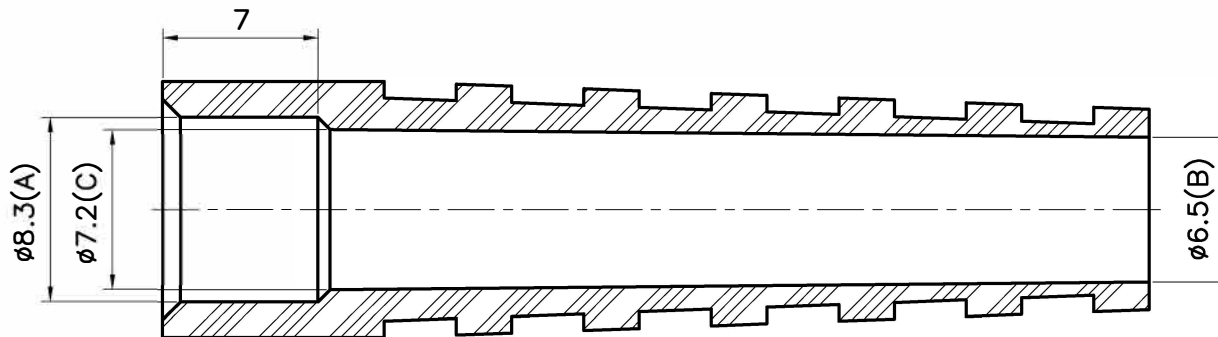
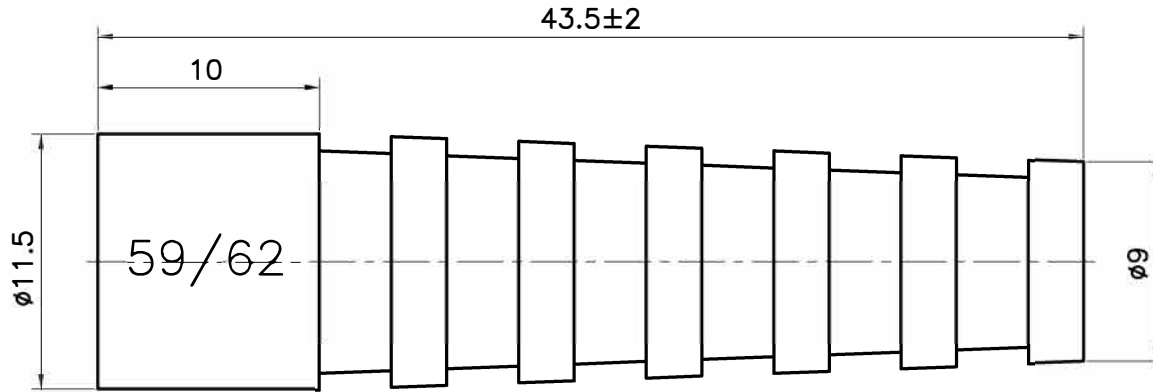
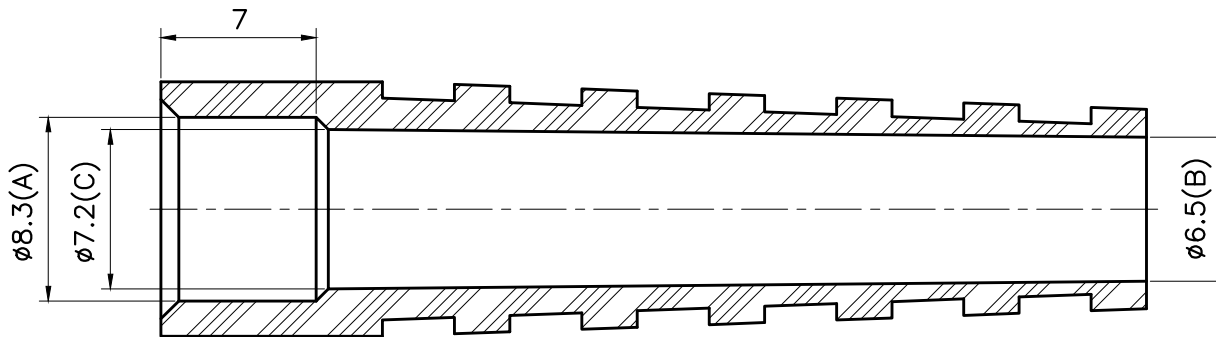
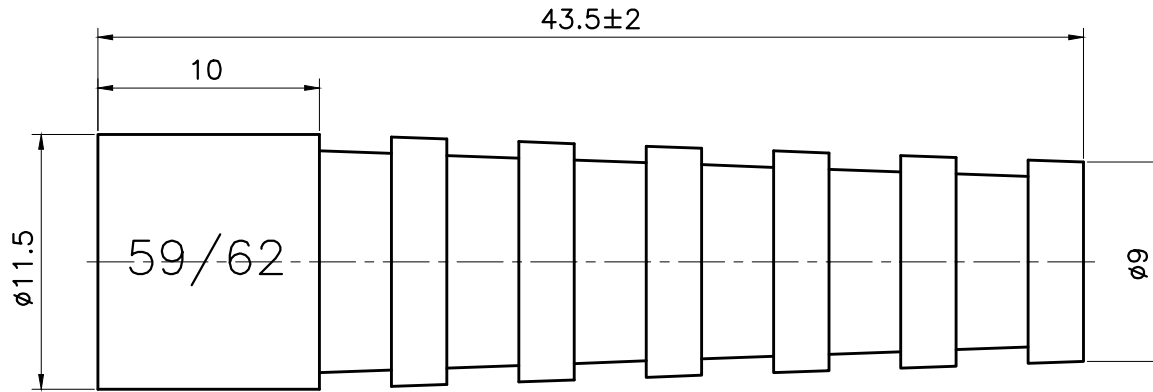


REVISIONS	
ISS	DESCRIPTION \ DATE
	03/16/10"



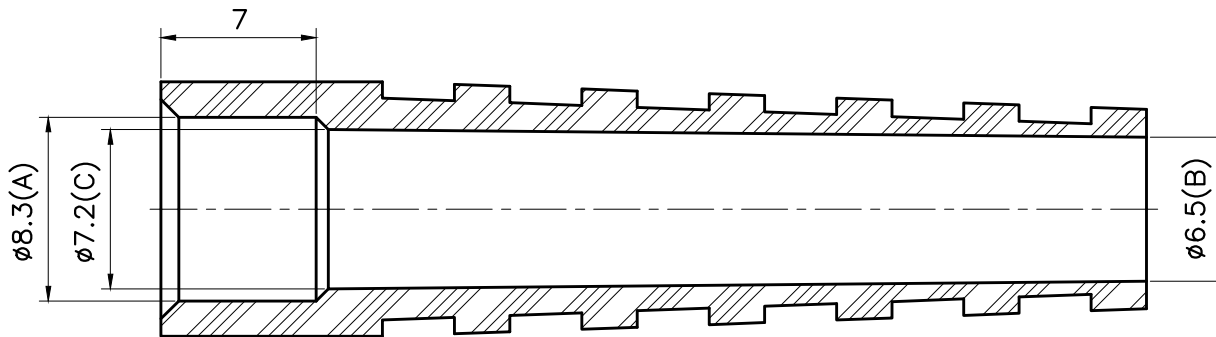
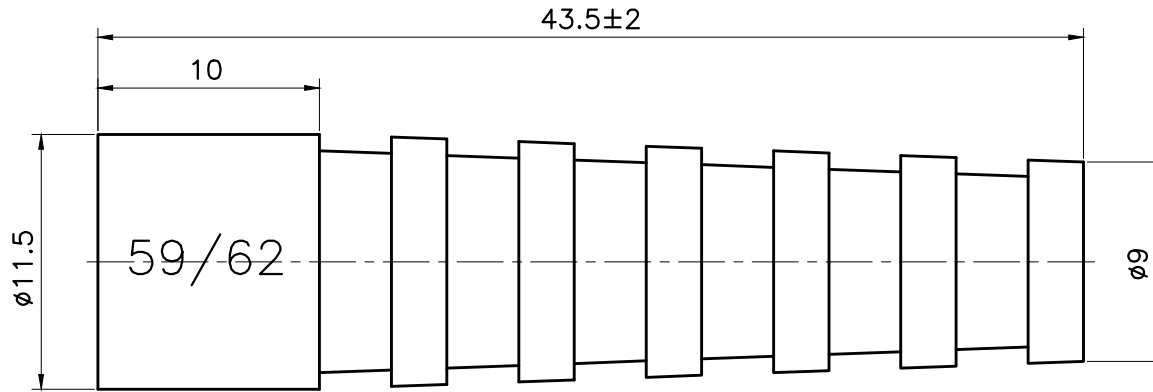
APRD:	UNLESS OTHERWISE SPECIFIED TOLERANCES 0.5-6 = $\pm 0.1$ >6-30 = $\pm 0.2$ >30-120 = $\pm 0.3$ >120-315 = $\pm 0.5$ >315-1000 = $\pm 0.8$ ANGLES = $\pm 3'$		TITLE: BOOT: 59U ( $\phi 7.2$ ), PVC, BLACK
CHKD:		UNIT: mm	PART NO: BOOT59 BLK
DR:		SCALE: 3/1	DR. NO: 16-0040-A(BTBC0059-7.2 $\phi$ BLACK)
		SHEET: .	

REVISIONS	
ISS	DESCRIPTION \ DATE
	03/16/10"



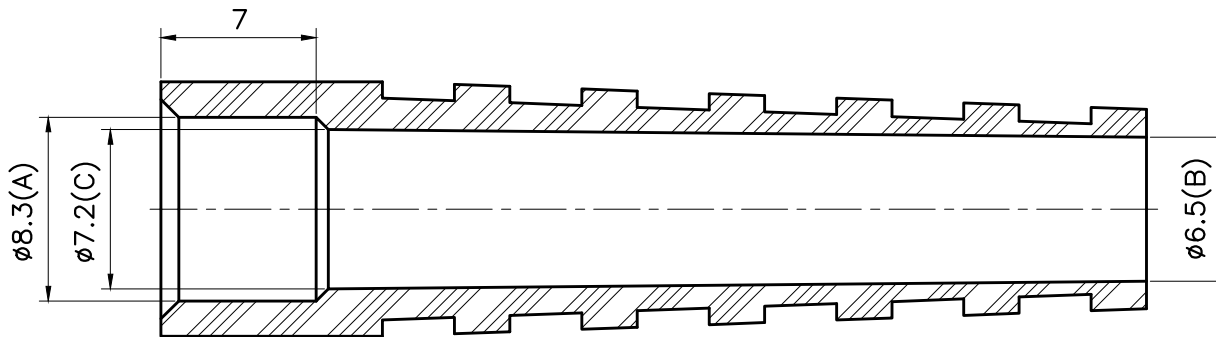
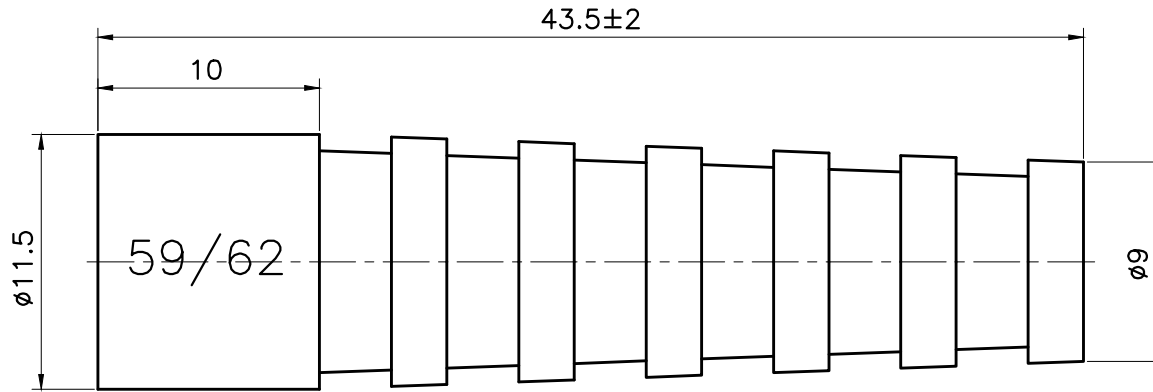
APRD:	UNLESS OTHERWISE SPECIFIED TOLERANCES 0.5-6 = $\pm 0.1$ >6-30 = $\pm 0.2$ >30-120 = $\pm 0.3$ >120-315 = $\pm 0.5$ >315-1000 = $\pm 0.8$ ANGLES = $\pm 3^\circ$		TITLE: BOOT: 59U ( $\phi 7.2$ ), PVC, BLUE
CHKD:		UNIT: mm	PART NO: BOOT59 BLU
DR:		SCALE: 3/1	SHEET: .

REVISIONS	
ISS	DESCRIPTION \ DATE
	03/16/10"



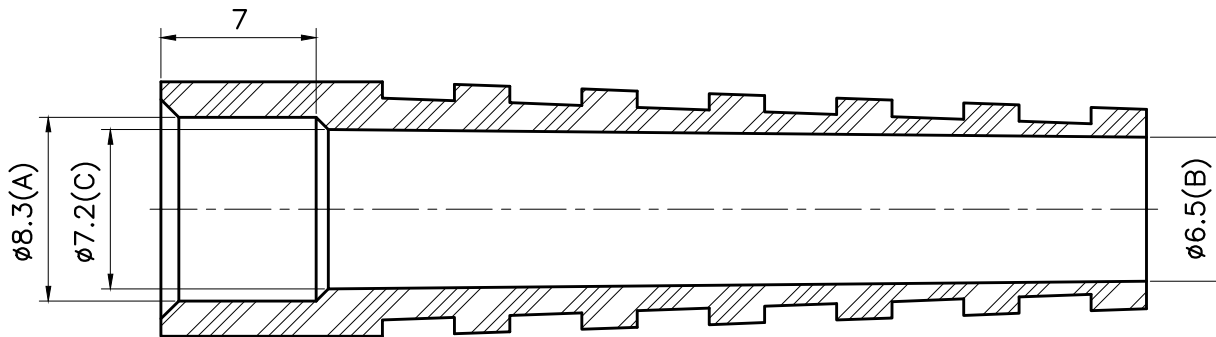
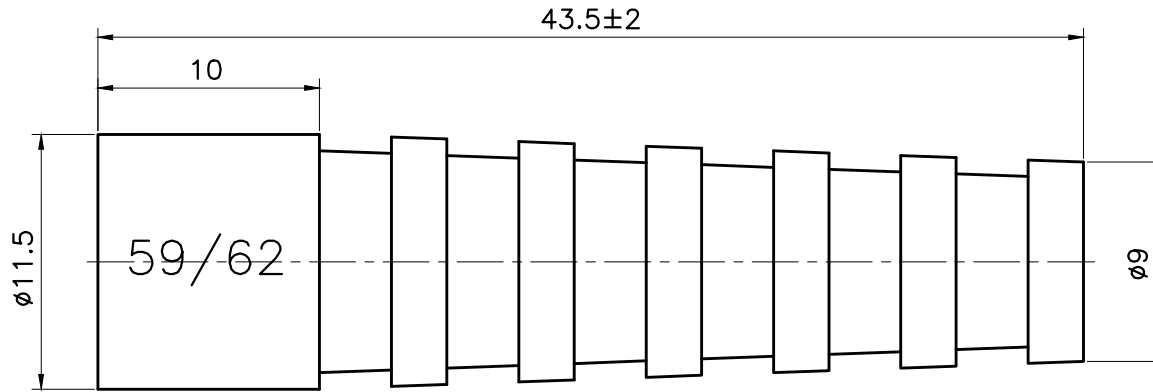
APRD:	UNLESS OTHERWISE SPECIFIED TOLERANCES 0.5-6 = $\pm 0.1$ >6-30 = $\pm 0.2$ >30-120 = $\pm 0.3$ >120-315 = $\pm 0.5$ >315-1000 = $\pm 0.8$ ANGLES = $\pm 3^\circ$		TITLE: BOOT: 59U ( $\phi 7.2$ ), PVC, GREEN
CHKD:		UNIT: mm	PART NO: BOOT59 GRN
DR:		SCALE: 3/1 SHEET: .	DR. NO: 16-0045(BTBC0059-7.2 $\phi$ GREEN)

REVISIONS	
ISS	DESCRIPTION\DATE
	03/16/10"



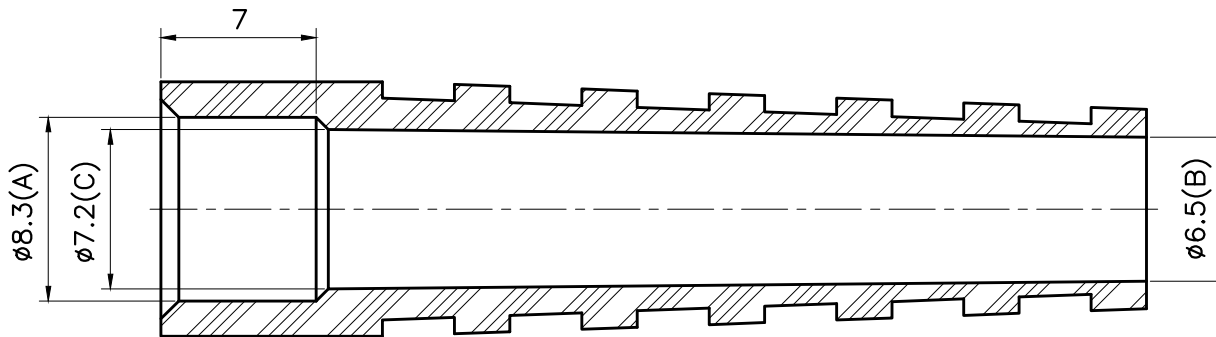
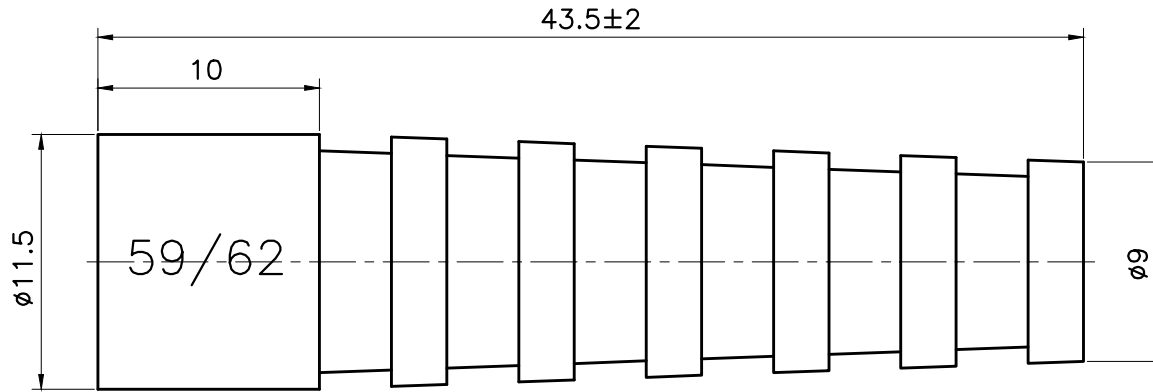
APRD:	UNLESS OTHERWISE SPECIFIED TOLERANCES 0.5-6 = $\pm 0.1$ >6-30 = $\pm 0.2$ >30-120 = $\pm 0.3$ >120-315 = $\pm 0.5$ >315-1000 = $\pm 0.8$ ANGLES = $\pm 3^\circ$		TITLE: BOOT: 59U ( $\phi 7.2$ ), PVC, RED
CHKD:		UNIT: mm	PART NO: BOOT59 RED
DR:		SCALE: 3/1 SHEET: .	DR. NO: 16-0042(BTBC0059-7.2 $\phi$ RED)

REVISIONS	
ISS	DESCRIPTION \ DATE
	03/16/10"



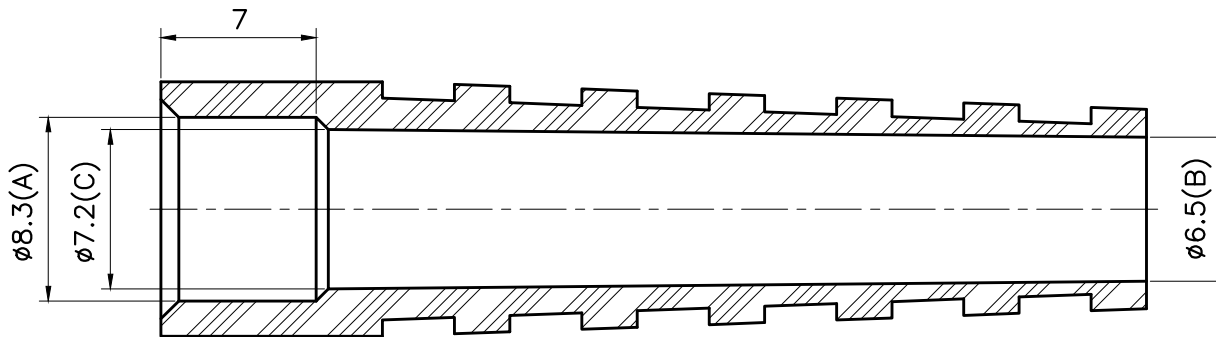
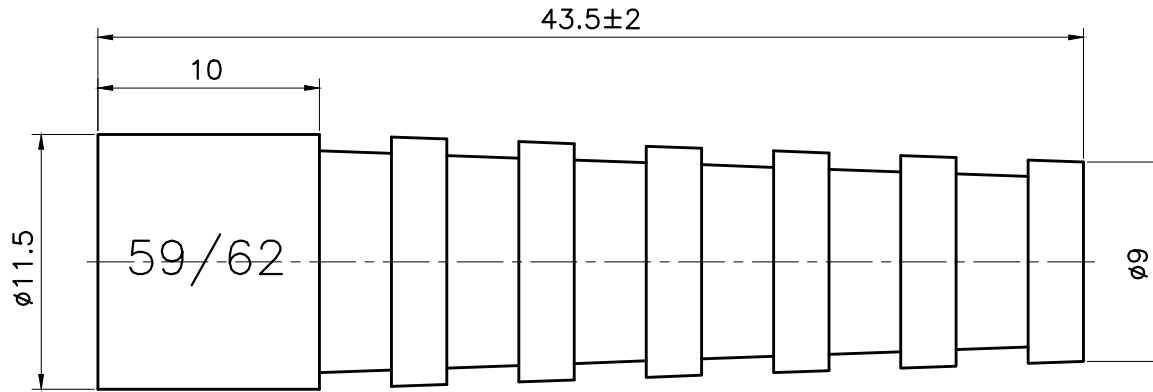
APRD:	UNLESS OTHERWISE SPECIFIED TOLERANCES 0.5-6 = $\pm 0.1$ >6-30 = $\pm 0.2$ >30-120 = $\pm 0.3$ >120-315 = $\pm 0.5$ >315-1000 = $\pm 0.8$ ANGLES = $\pm 3^\circ$		TITLE: BOOT: 59U ( $\phi 7.2$ ), PVC, PURPLE
CHKD:		UNIT: mm	PART NO: BOOT59 VIO
DR:		SCALE: 3/1	SHEET: .

REVISIONS	
ISS	DESCRIPTION \ DATE
	03/16/10"



APRD:	UNLESS OTHERWISE SPECIFIED TOLERANCES 0.5-6 = $\pm 0.1$ >6-30 = $\pm 0.2$ >30-120 = $\pm 0.3$ >120-315 = $\pm 0.5$ >315-1000 = $\pm 0.8$ ANGLES = $\pm 3^\circ$		TITLE: BOOT: 59U ( $\phi 7.2$ ), PVC, WHITE
CHKD:		UNIT: mm	PART NO: BOOT59 WHI
DR:		SCALE: 3/1	DR. NO: 16-0049(BTBC0059-7.2 $\phi$ WHITE)
		SHEET: .	

REVISIONS	
ISS	DESCRIPTION \ DATE
	03/16/10"



APRD:	UNLESS OTHERWISE SPECIFIED TOLERANCES 0.5-6 = $\pm 0.1$ >6-30 = $\pm 0.2$ >30-120 = $\pm 0.3$ >120-315 = $\pm 0.5$ >315-1000 = $\pm 0.8$ ANGLES = $\pm 3^\circ$		TITLE: BOOT: 59U ( $\phi 7.2$ ), PVC, YELLOW
CHKD:		UNIT: mm	PART NO: BOOT59 YELLOW
DR:		SCALE: 3/1 SHEET: .	DR. NO: 16-0044(BTBC0059-7.2 $\phi$ YELLOW)